

Soil Sampling • Soil-Tissue Analysis • Crop Scouting



OUR COMPANY

- Owned and operated by Dave & Sue Allen.
- Started in 1993 as a field office with two employees in a 32' x 36' building.
- In 1995 a new lab was built, followed by the addition of a new shop in 1996.
- July 27, 1997 officially became United Soils, Inc.
- Since then, the lab area has expanded twice (1998 & 2006). A new main office was built in 2003, followed by a new conference room and training center in 2006.
- USI employs 30 people year round, and also brings on seasonal help as needed.

Visit our website:
www.unitedsoilsinc.com

108 South Crystal Lane • PO Box 226 • Fairbury, IL 61739
 Ph: 815-692-2626 • Fx: 815-692-4483

• Soil Testing • Mapping
 • Consulting • Crop Scouting
 • i-FARM Precision Ag Software

Come see us at the 2011 InfoAg conference. Click on graphic below to go to the InfoAg website.

InfoAg Booth 33
 InfoAg 2011 Conference
 July 12-14, 2011 • Springfield, IL

Plant / Tissue Analysis:
 USI has expanded its lab services to include Plant / Tissue analysis. Learn more about this new opportunity under our Lab Services page.

Fall Price List:
 United Soils has released the 2011 Fall Pricelist. Contact your regional salesperson for details.

OUR SERVICES

- Geo-Reference Soil Sampling / Testing.
- Plant / Tissue Sampling / Testing.
- Colored Computer Nutrient Maps.
- Lab Tests for all Primary, Secondary & Micronutrients for crop production.
- Soybean Cyst Nematode (SCN) Testing.
- Soil Sample Pick-up at your location.
- Full Season Crop Scouting.
- Consulting with Retail Ag Chemical & Fertilizer Dealers on the business side of Precision Agriculture.
- Online Soil Test Order Placement, Digital Platmaps & Test Results.



We are committed to the necessary research and development of innovative ways to increase customer productivity.



United Soils is a member of the **Illinois Soil Testing Association (ISTA)**. We participate in their proficiency testing, as well as the **Agriculture Laboratory Proficiency Program (ALP)** & **North American Proficiency Testing Program (NAPT)**.

Soil Sampling

United Soils, Inc. understands the need for timely and accurate results, and it starts with collecting meaningful samples. Our field technicians follow strict field mapping & sample collection protocol to assure the lab receives the most representative field samples possible.

USI uses GPS mapping technology to generate field maps and their associated grid / core sample locations. Cores are collected and composited surrounding the pre-determined sampling site.



Results from the soil analysis are processed with GIS data-handling software to create field and nutrition-based maps.

This approach provides the most efficient and accurate results for our customers.

USI pulls and tests samples based on customer requests. Our website's online order form starts the process. Check our website to learn more about our order entry process.

We pride ourselves on our customer service and strive to achieve the below goals for each and every job:

- Fast
- Affordable
- Predictive
- Reproducible
- Widely applicable
- Track changes in fertility

Soil-Tissue Analysis

USI offers a full-functioning analysis lab with the means to test the following soil attributes:

- pH
- Buffer pH
- Phosphorus
- Potassium
- Calcium
- Magnesium
- Soil Organic Matter
- Copper



From check-in to final analysis, we control every aspect of a customer order to assure prompt and accurate results.

To assure quality assurance, USI participates in the **Agricultural Laboratory Proficiency & North American Proficiency Testing** programs.

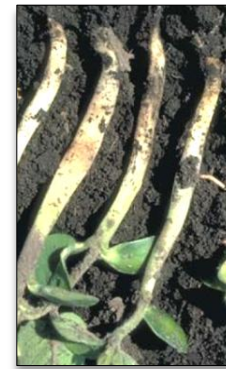
For internal quality checks, our lab technicians place a series of soil standards before and within a group of samples to be analyzed each day. This allows data evaluation before and during each soil analysis.



Crop Scouting

Crop Scouting is an essential part of Integrated Pest Management (IPM). Integrated Pest Management uses field-specific information and improved decision-making to protect crop yield and quality while minimizing the risks associated with pesticide use.

Through a regular and systematic field-sampling program, information gained by scouting fields is crucial for making decisions on in-season pest management treatments as well as making decisions about pest management in future years.



Pest management professionals will use crop scout findings to select and implement a pest management program.

A complete and legible scouting report is the essential "road map" that guides pest management decisions.

A well-designed scouting program includes three main activities:

1. Sampling to provide an accurate estimate of pest densities and crop health.
2. Identification of pests or diagnosis of the cause of crop injury based on observable symptoms.
3. Comparison of observed pest pressure or crop injury to recommended economic injury levels or economic thresholds.

