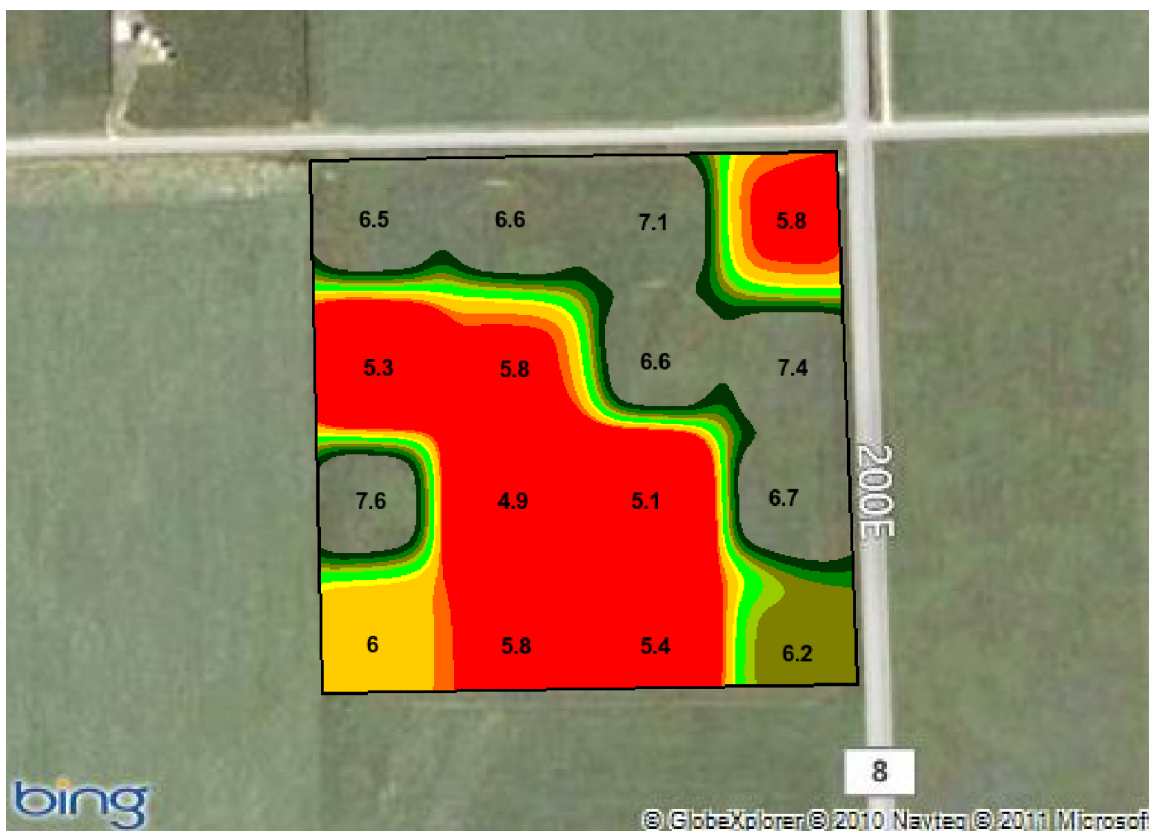


Customer: USI Farms Farm: Ridgeville -

Field: Onarga

Acres: 38.14



lb/ac

999.9 to 1499.9 1499.9 to 1999.9 1999.9 to 2499.9 2499.9 to 2999.9 2999.9 to 3499.9 3500.0 to 3999.9 4000.0 to 4499.9 4500.0 to 4999.9 5000.0 to 5499.9 5500.0+

U of IL Lime			Soybeans 50 / Corn 180					
Soil Data	Yield Data	Build Level	# Build Appl	Min Rate	Min Cutoff	Max Rate	+/-	Rate % Adjust
2006-05-24		6.2		1000	1000	6000	0	1

Application	
<b>Min App. Rate:</b> 1000.00 lb/ac	<b>Est. Product Cost:</b> \$0.00/T
<b>Max App. Rate:</b> 6000.00 lb/ac	<b>Est. Product Total Cost:</b> \$0.00
<b>Avg App. Rate:</b> 3109.38 lb/ac	<b>Est. App. Cost/Acre:</b> \$7.00
<b>Total App. Acres:</b> 24.66	<b>Est. Total App. Cost:</b> \$267.01
<b>Total App.:</b> 59.30 Ton(s)	<b>Est. Combined Cost:</b> \$267.01

Additional Information

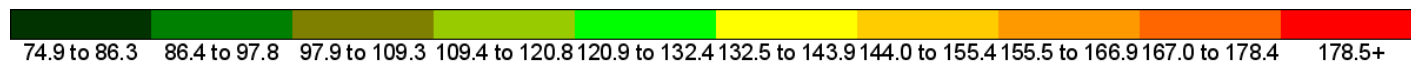
Customer: USI Farms Farm: Ridgeville -

Field: Onarga

Acres: 38.14



lb/ac

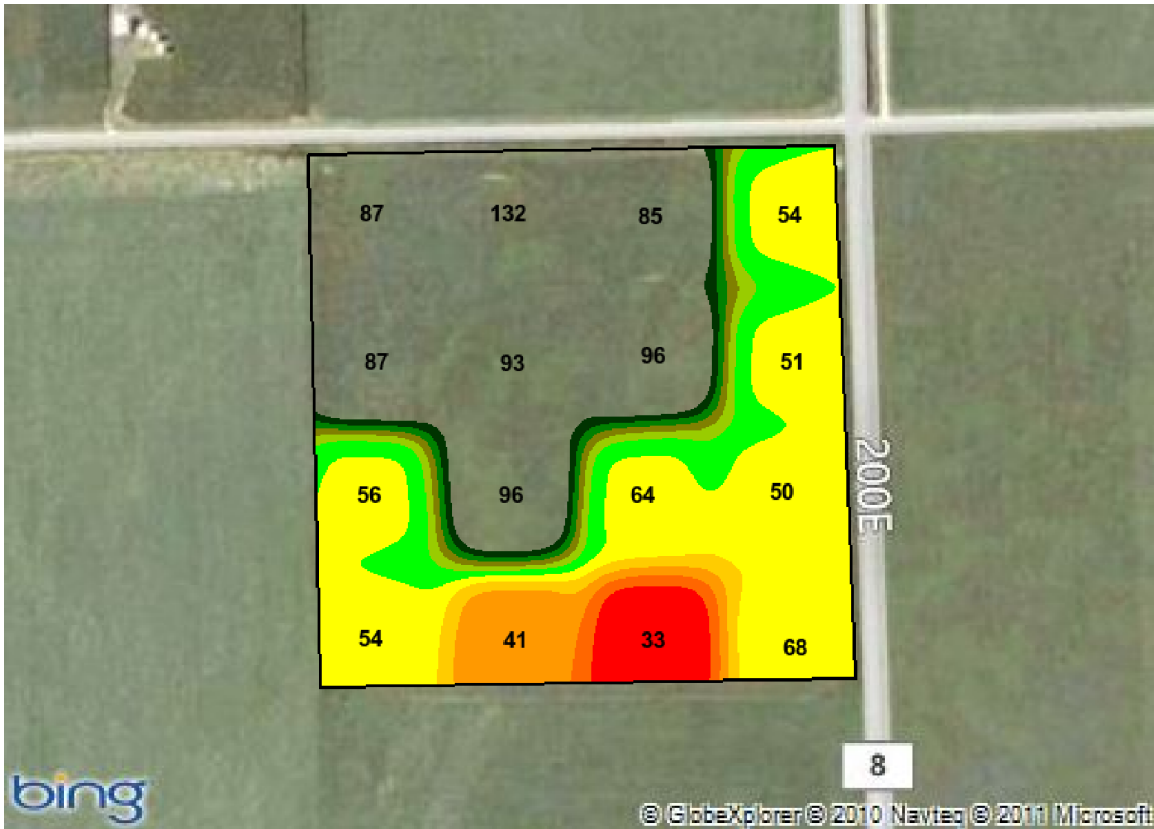


U of IL K			Soybeans 50 / Corn 180					
Soil Data	Yield Data	Build Level	# Build Appl	Min Rate	Min Cutoff	Max Rate	+/-	Rate % Adjust
2006-05-24			2	75	75	500	0	1

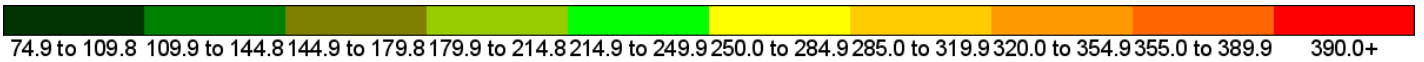
### Application

<b>Min App. Rate:</b>	79.81 lb/ac	<b>Est. Product Cost:</b>	\$0.00/T
<b>Max App. Rate:</b>	187.80 lb/ac	<b>Est. Product Total Cost:</b>	\$0.00
<b>Avg App. Rate:</b>	74.94 lb/ac	<b>Est. App. Cost/Acre:</b>	\$7.00
<b>Total App. Acres:</b>	17.13	<b>Est. Total App. Cost:</b>	\$267.01
<b>Total App.:</b>	1.43 Ton(s)	<b>Est. Combined Cost:</b>	\$267.01

### Additional Information

lb/ac



U of IL P			Soybeans 50 / Corn 180					
Soil Data	Yield Data	Build Level	# Build Appl	Min Rate	Min Cutoff	Max Rate	+/-	Rate % Adjust
2006-05-24		50	2	75	75	450	0	1

Application	
<b>Min App. Rate:</b> 89.32 lb/ac	<b>Est. Product Cost:</b> \$0.00/T
<b>Max App. Rate:</b> 417.73 lb/ac	<b>Est. Product Total Cost:</b> \$0.00
<b>Avg App. Rate:</b> 144.77 lb/ac	<b>Est. App. Cost/Acre:</b> \$7.00
<b>Total App. Acres:</b> 21.03	<b>Est. Total App. Cost:</b> \$267.01
<b>Total App.:</b> 2.76 Ton(s)	<b>Est. Combined Cost:</b> \$267.01

Additional Information



# Application Summary

<b>Customer(s):</b> USI Farms	<b>Field(s):</b> Onarga Ridgeville West 80
<b>Farm(s):</b> Ridgeville - Onarga Farm	<b>Sub-Field(s):</b> MASTER

Application Parameters							
Ref #	Product	Nutrient	Min Mch Rate	Act Min Rate	Act Max Rate	Prod Cost	App Cost/Ac
1	Lime		1000.0(lb/ac)	1000.0(lb/ac)	6000.0(lb/ac)	\$0.00/T	\$7.00
2	Potash	K	75.0(lb/ac)	79.8(lb/ac)	187.8(lb/ac)	\$0.00/T	\$7.00
3	DAP	P	75.0(lb/ac)	89.3(lb/ac)	417.7(lb/ac)	\$0.00/T	\$7.00

Application Results							
Ref #	Product	App Amt	App Amt	Tot Prod Cost	App Acres	Tot App Cost	Est Tot Cost
1	Lime	118606(lb)	59.30(tons)	\$0.00	24.66	\$267.01	\$267.01
2	Potash	2859(lb)	1.43(tons)	\$0.00	17.13	\$267.01	\$267.01
3	DAP	5522(lb)	2.76(tons)	\$0.00	21.03	\$267.01	\$267.01

**Total:** \$801.04

**Avg. Cost Per Acre:** \$21.00